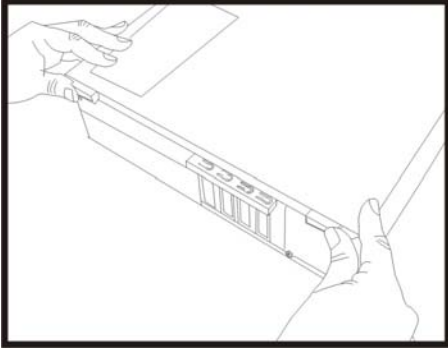


YY-73xx Series Instruction Manual

Opening Chassis

Release screws on the back of chassis.

Push the cover toward rear of the chassis, should stop about moving 1/2 inch, than the side cover could be lift up.



How to remove the front panel

After removing the side cover.

Push hooks marked in circle to detach the front panel from the chassis.

Do not try to swing or pull straightly out; the hooks of front panel may be damaged.

Installing MB and Add-on cards

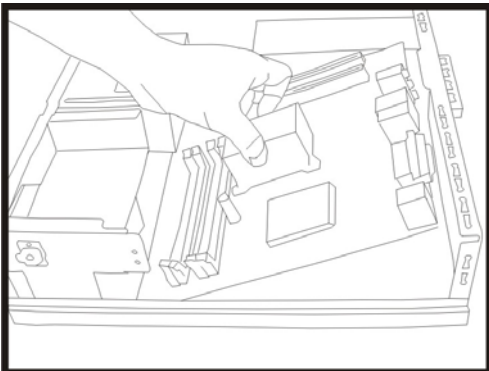
Remove air partition first.

To check the mounting hole of the mainboard, screw on the optional standoffs into chassis. To install the I/O shield provided with mainboard, insert it from inside of chassis towards outside.

Screw off the PCI holder bracket in the rear end of chassis; remove the bracket.

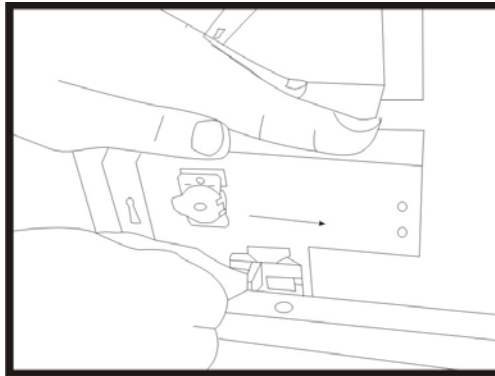
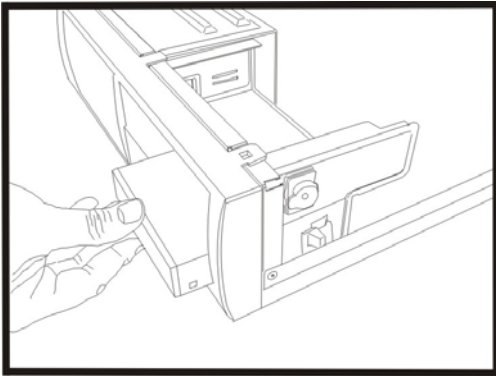
Insert add-on card into slot.

The bracket is designed to fix all add-on cards in one screw.



Installing 3.5" devices

Card Reader or FDD-Insert through front bezel, push the fastener towards the rear end of chassis.

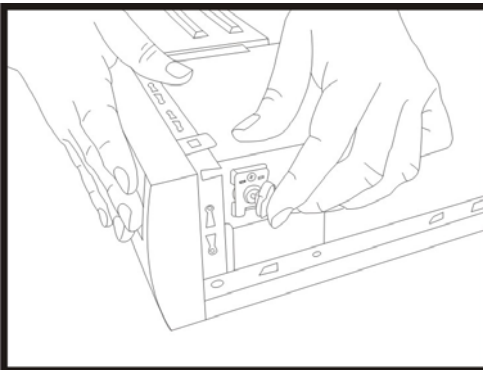
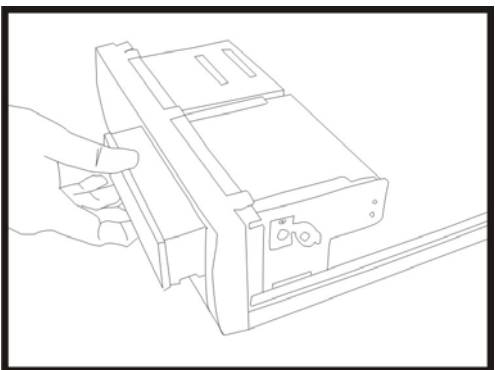


Installing 5.25" devices

Please make sure the front panel has been on the chassis.

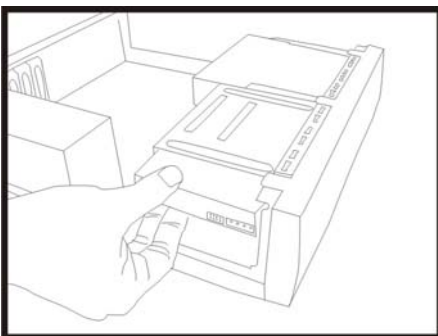
The chassis designed with quick fasteners for fixing 5.25 devices.

Open the fastener as marked direction. Insert the 5.25" device into the 5.25" drive bay until in correct position (hole to hole). Depress the fastener tightly.



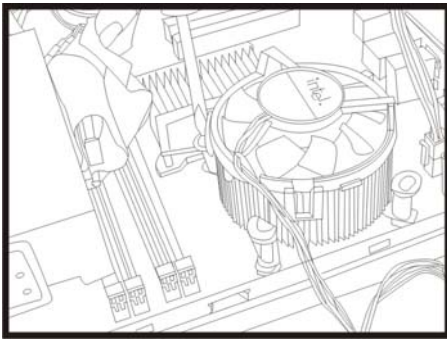
Installing HDD devices

Push the HDD in the cage, and depress the fastener tightly.



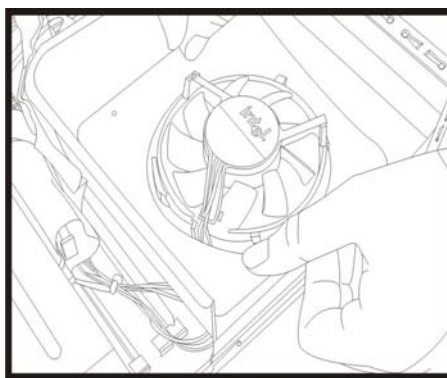
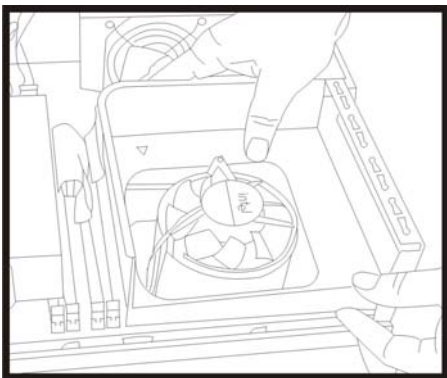
CPU and HS Assembly

Please follow the assembly instruction of CPU and Heat sink.



Air Partition Assembly

To snap the air partition into the chassis. Remove the label of adhesive part, trap it around the CPU cooler and stick with the air partition.



Cables mounting / connectors

The pin out of USB2.0, AUDIO, IEEE1394 header provided by chassis is compliant with FPIO spec of www.formfactors.org Before connecting the cables, please check pin arrangement information on the mainboard manual.

Security lock

The chassis is designed with bracket for Padlock, Kensington Slot Lock and optional intrusion switch also available in the rear end of chassis.

Cooling Fan assembly

An optional 6cm or 8cm cooling fan could be assembly in the front of chassis.

Suggestion: The chassis is compliant with Thermally Advantaged Chassis design guide, user may decide the thermal solution depends on configuration required.