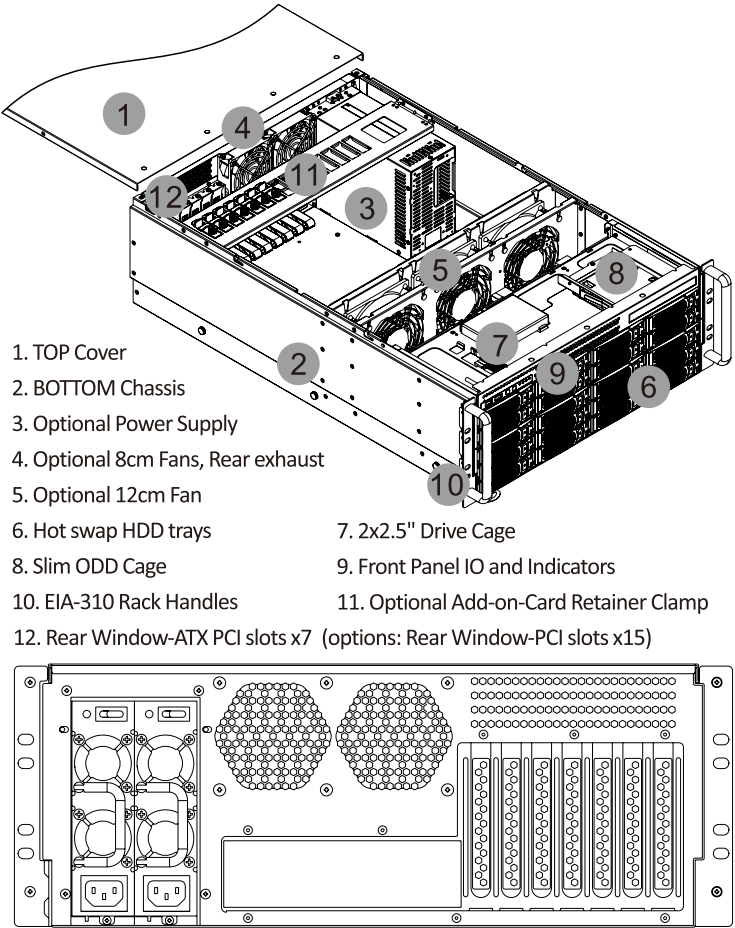
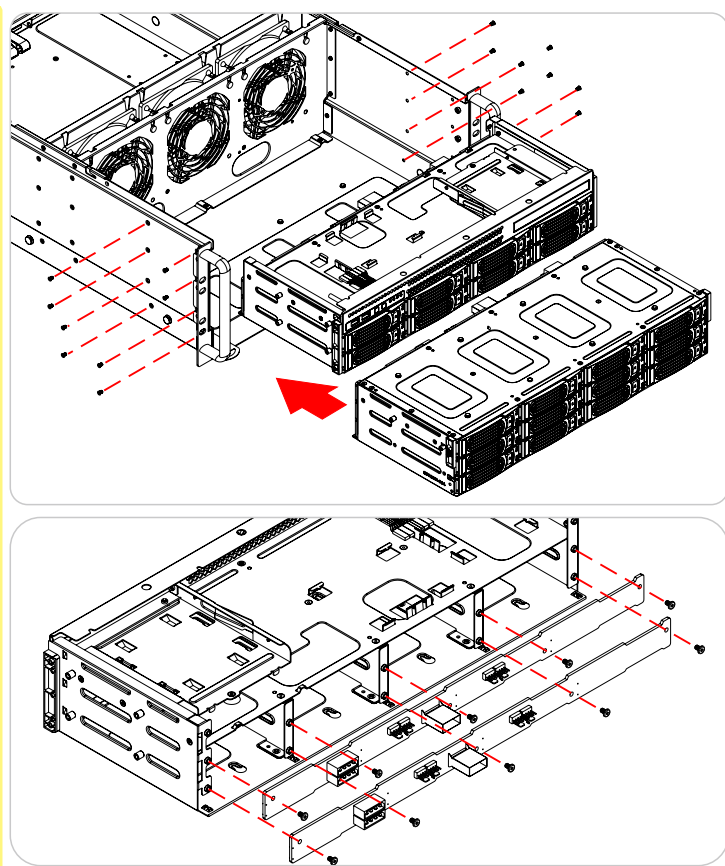


Quick Assembly Guide

YY-R4620 Components Assembly and Placement

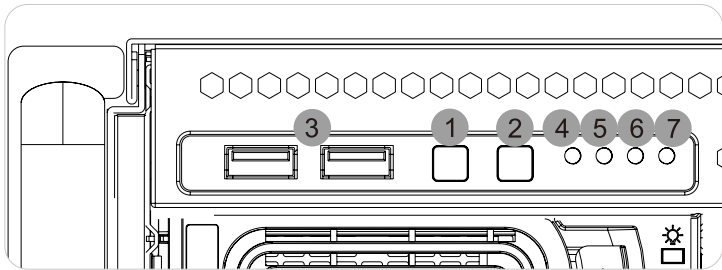


Backplane modular



YY-R4620 is supplied with an 8-bays and a 12 bays backplane modular. The modular contents backplane PCBs and hot swap HDD trays. Each backplane PCB could be maintained by releasing the screws as pictures shown.

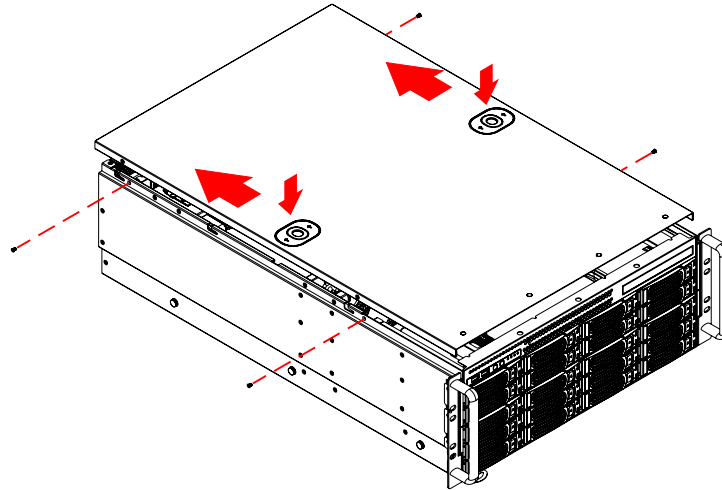
Front Panel IO and Indicators



1. Power on Switch
2. System Reset Switch
3. USB3.0 / USB2.0 ports
4. Power on LED (Blue)
5. HDD Activity (Green)
6. Lan1 LED (Green)
7. Lan2 LED (Green)

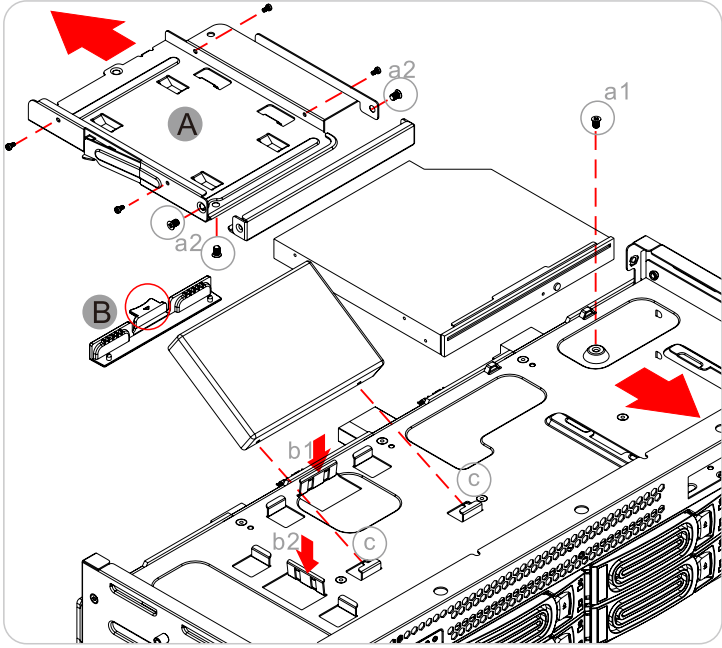
Removing the Top Cover

1. Release 2-screws of the Top Cover on each side
2. Press the auto lock button and push the Top Cover backward about 1" and lift it off the chassis



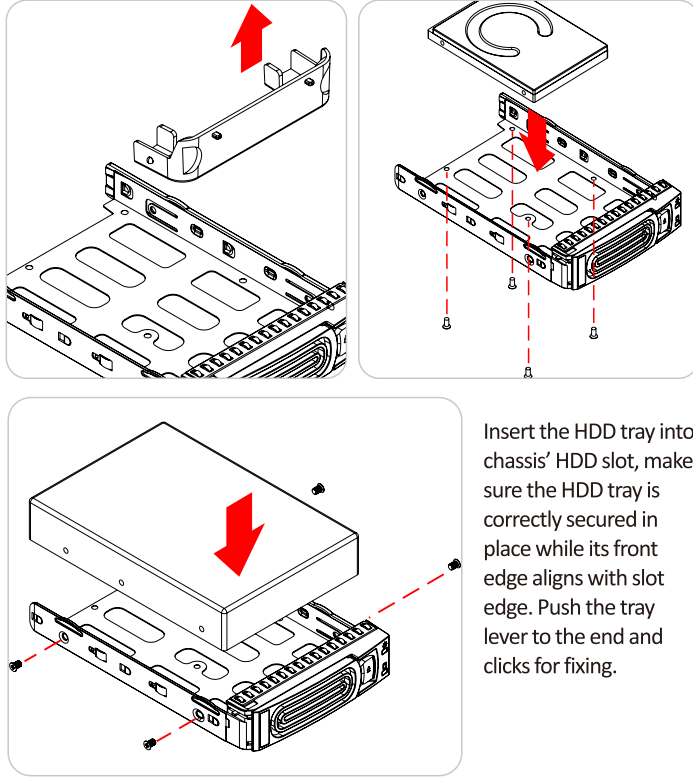
Slim ODD and 2.5" hard drive Assembly

- The slim ODD drive bay**
1. Release screw **a1**, push backward then lift the the ODD cage **A**.
 2. Release 3 screws **a2** to remove the dummy ODD cover.
 3. Insert ODD into the cage and secure with 4 screws (M2 screws for slim ODD)
 4. Forward and insert the ODD cage into chassis, fixed with screw **a1**.
- The 2.5" HDD drive bay**
- The 2.5"HDD could be installed in **b1** and **b2** bays.
5. Attach the mount kit **B** to 2.5"HDD, there are two pins to fix with HDD's bottom mounting holes.
 6. Insert 2.5"HDD assembly with mount kit into the drive bay, align two pins **c** to fix with HDD's side mounting holes, push the mount kit on chassis.

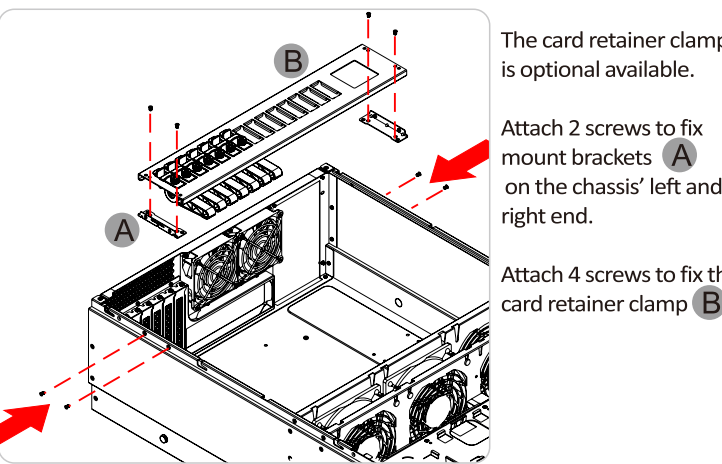


Install hard drives into hot swap HDD Tray

1. The dummy HDD is designed to block air flow when the HDD tray come without HDD installed. Remove it when HDD shall be installed.
2. The HDD Tray also could be installed with 2.5"drive. Insert HDD on the tray and secured with 4 screws on the bottom side.
3. Insert 3.5"HDD on the tray, fix HDD with 4 screws on both sides.

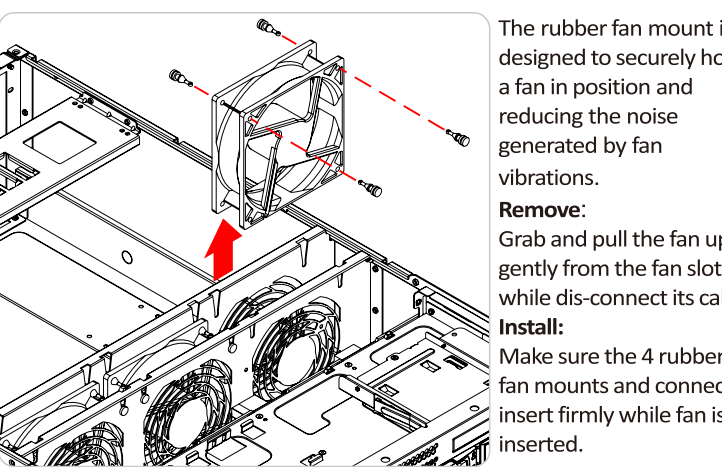


Card Clamp Holder Assembly



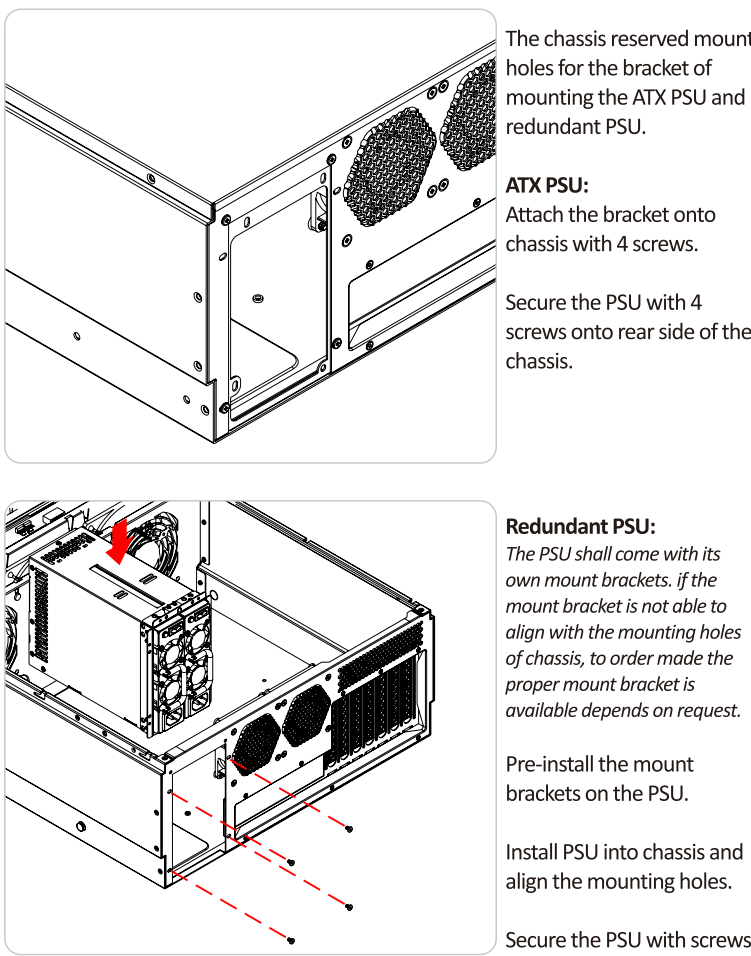
- The card retainer clamp is optional available.
- Attach 2 screws to fix mount brackets **A** on the chassis' left and right end.
- Attach 4 screws to fix the card retainer clamp **B**.

Cooling Fan Assembly



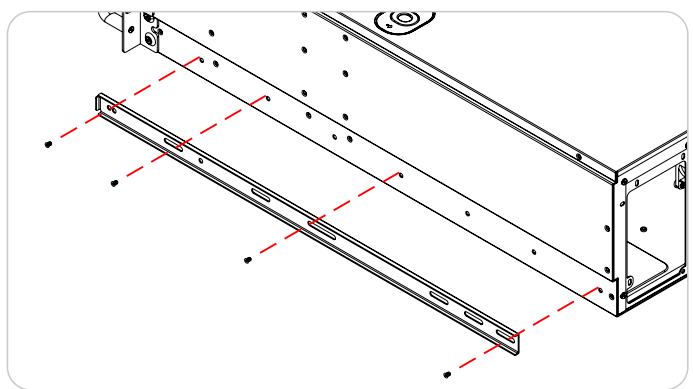
- The rubber fan mount is designed to securely hold a fan in position and reducing the noise generated by fan vibrations.
- Remove:**
Grab and pull the fan up gently from the fan slot while dis-connect its cable.
- Install:**
Make sure the 4 rubber fan mounts and connector insert firmly while fan is inserted.

Power Supply Assembly



- The chassis reserved mount holes for the bracket of mounting the ATX PSU and redundant PSU.
- ATX PSU:**
Attach the bracket onto chassis with 4 screws.
- Secure the PSU with 4 screws onto rear side of the chassis.
- Redundant PSU:**
The PSU shall come with its own mount brackets. if the mount bracket is not able to align with the mounting holes of chassis, to order made the proper mount bracket is available depends on request.
- Pre-install the mount brackets on the PSU.
- Install PSU into chassis and align the mounting holes.
- Secure the PSU with screws.

Rack Mounting with the Optional Rails



- Overview**
- There are a variety of rack units and slides rails on the market, which may mean the assembly procedure will differ, user should also refer to the installation instructions that came with the Rack Unit and Rails.
- About the Mounting holes for Slide Rails**
- The chassis come with mounting holes for rail slides with pitch of 92mm.
- Separating the sections of the Slide Rails**
- The optional rails package includes 2 rail assemblies, consists of:
- (1) an inner rail that shall be secures directly to the chassis
 - (2) an outer extending rails that shall be secures directly to the rack. The outer extending rails shall assembly with the Mounting Brackets which is available to correctly position the slide rail relative to the cabinet mounting rails pattern.