

(W1)

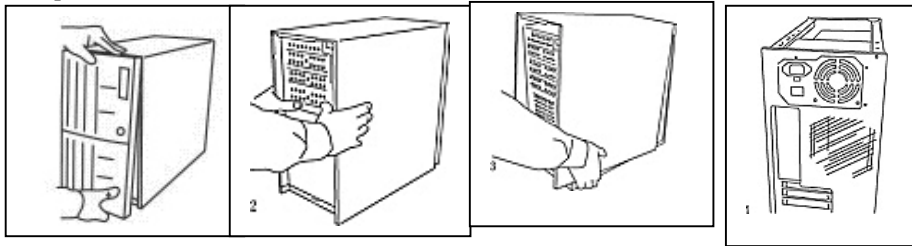
# MIDDLE TOWER

## TECHNICAL INSTRUCTION

### Opening the case:

Pull out the front panel

Lift up top cover to take off from front side. Take off 3pcs screws, pull top cover to front side and lift up.



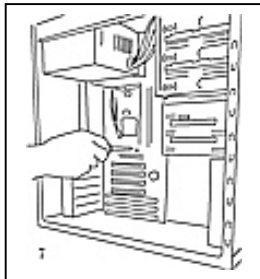
Find the accessory kits inside of chassis, to assembly system with next steps:

### 1. Power supply (optional) installation:

Putting the power supply on tray, screw in for fixing

### 2. M/B installation:

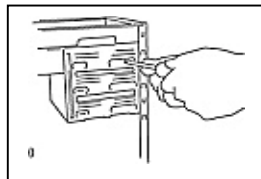
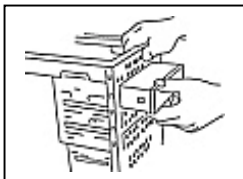
Install I/O shield (putting from inside of case). Finding correct mounting hole for M/B, screw in standoffs. Fasten M/B with the screw. Install add-on-cards.



The add-on-card clamp holder can

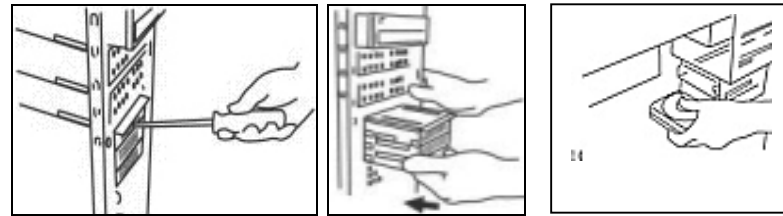
### 3. CD-ROM installation

Pulling out the metal 5.25" cover with screwdriver. Slid in drive from front side into case. Screw in drive



### 4. 3.5" floppy/hard disk installation:

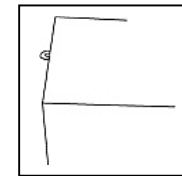
Slid in drive from front side into case. Screw in the drive. Hidden FDD bay: Install FDD without removal of FDD bezel.



### 5. Application of lock plate

Screw in the lock plate

Apply a lock (optional) to secure the case

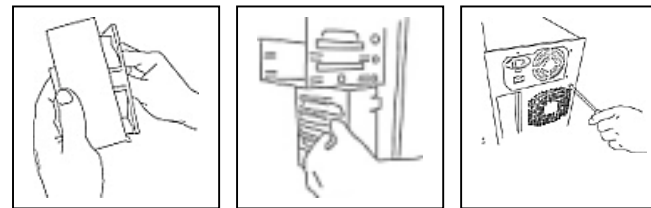


### 6. System cooling fan (optional)

Two 12cm fans could be screw in front plate and/or rear side.

Front one: Squeeze a fan into fan bracket

Rear one: Locate the fan inside of chassis, screw in from outside chassis



### 7. Routing cables

### 8. Close the chassis

Slide in top cover from front side to rear side, fixing with 3pcs screws.

Snap in front panel without screw.

